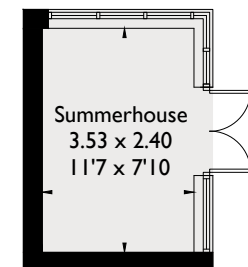
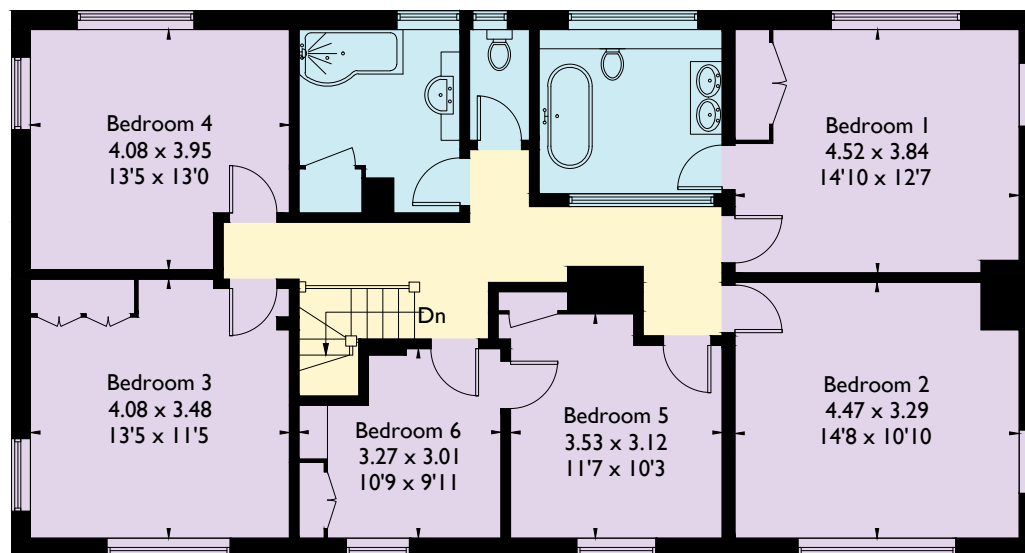


Langham Lodge, Bucklebury Alley, Cold Ash

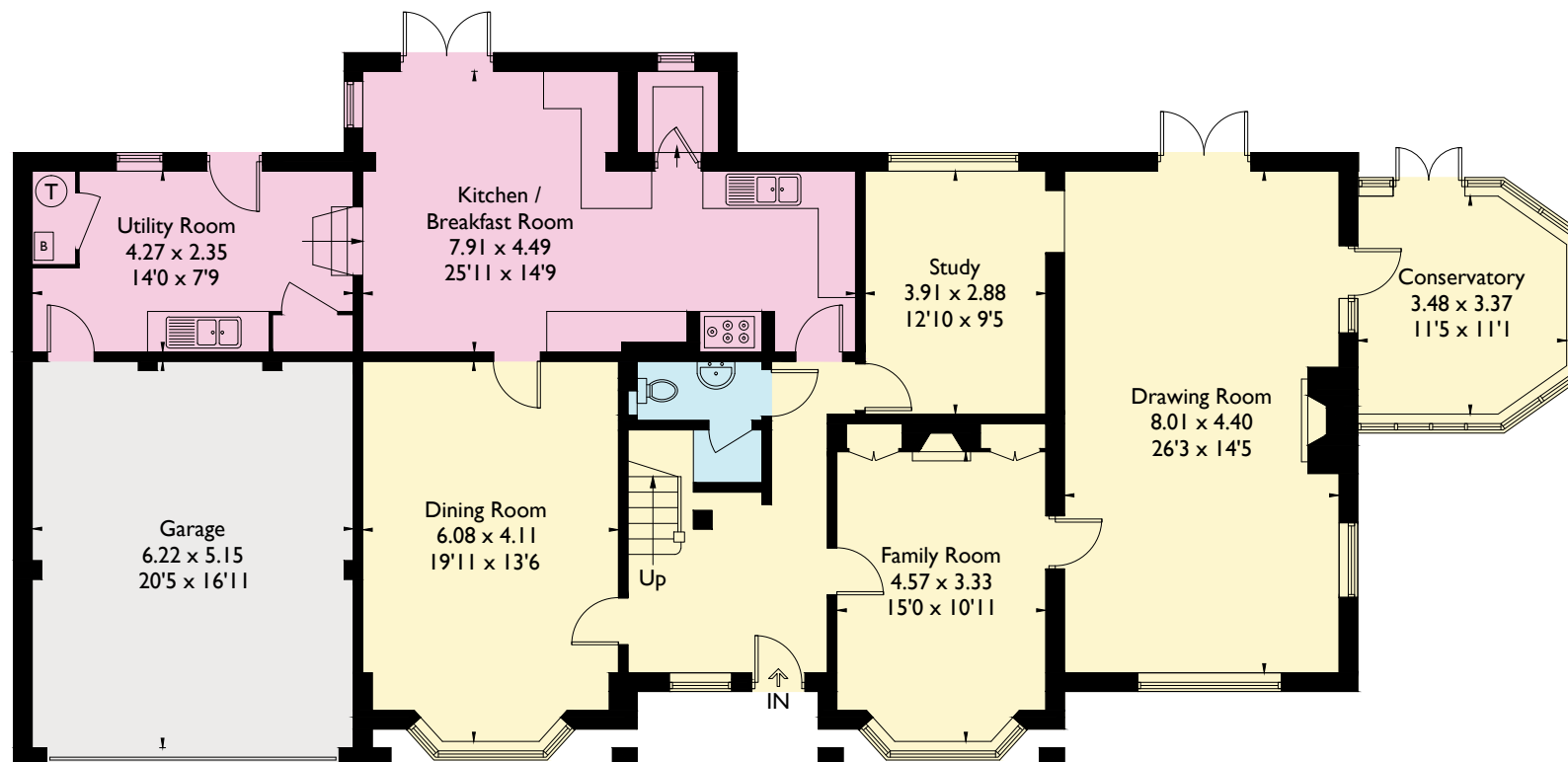
Approximate Gross Internal Area
House = 296 sq m / 3186 sq ft
Garage = 32 sq m / 344 sq ft
Summerhouse = 8.4 sq m / 90 sq ft
Total = 336.4 sq m / 3620 sq ft



(Not Shown In Actual
Location / Orientation)



First Floor



Ground Floor



Floorplanz © 2018
0203 9056099 Ref: 211077

This plan is for layout guidance only.
Drawn in accordance with
RICS guidelines. Not drawn to
scale, unless stated. Windows &
door openings are approximate.
Whilst every care is taken in the
preparation of this plan, please check
all dimensions, shapes & compass
bearings before making any
decisions reliant upon them.