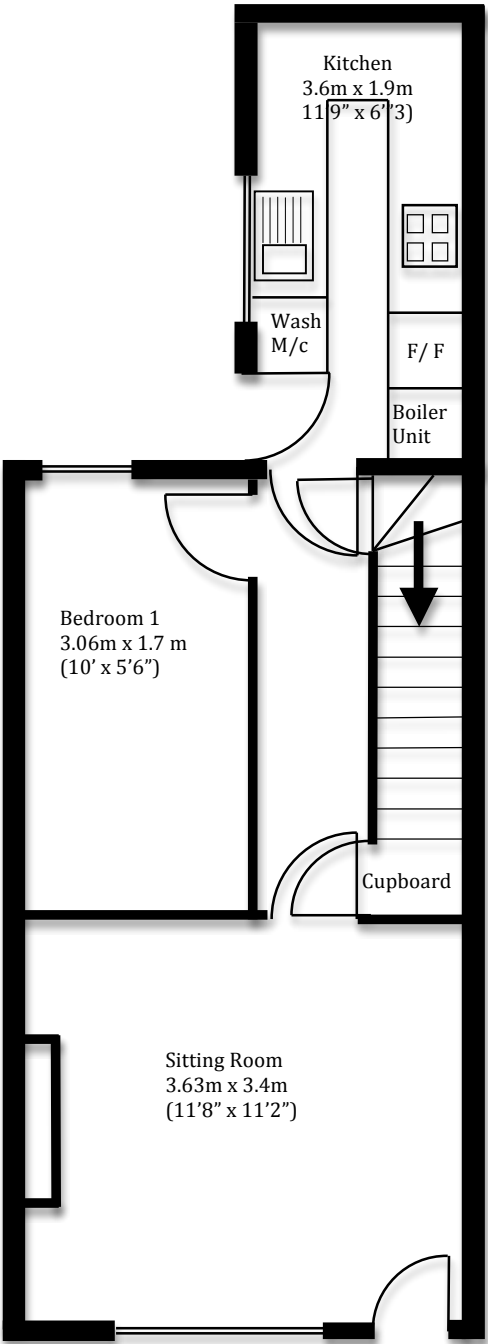


69 Caludon Road,
Coventry, CV2 4LR

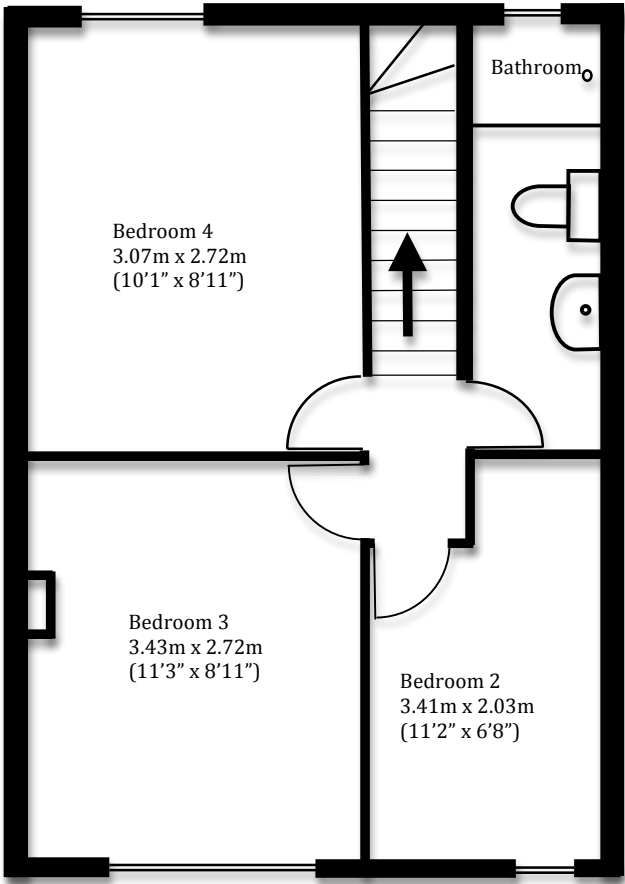
Ground Floor

Approx. 30 sq m



First Floor

Approx. 38 sq m



Total area: approx 68 sq. metres (732 sq. feet)

Not to scale, for identification purposes only. Measurements are intended as a guideline and should not be relied upon. Prospective purchasers should commission their own inspections or obtain verification from their solicitor or survey prior to exchange of contracts.