

# West Oaks, Pledgdon Green, Henham, Bishop's Stortford,

Approximate Gross Internal Area

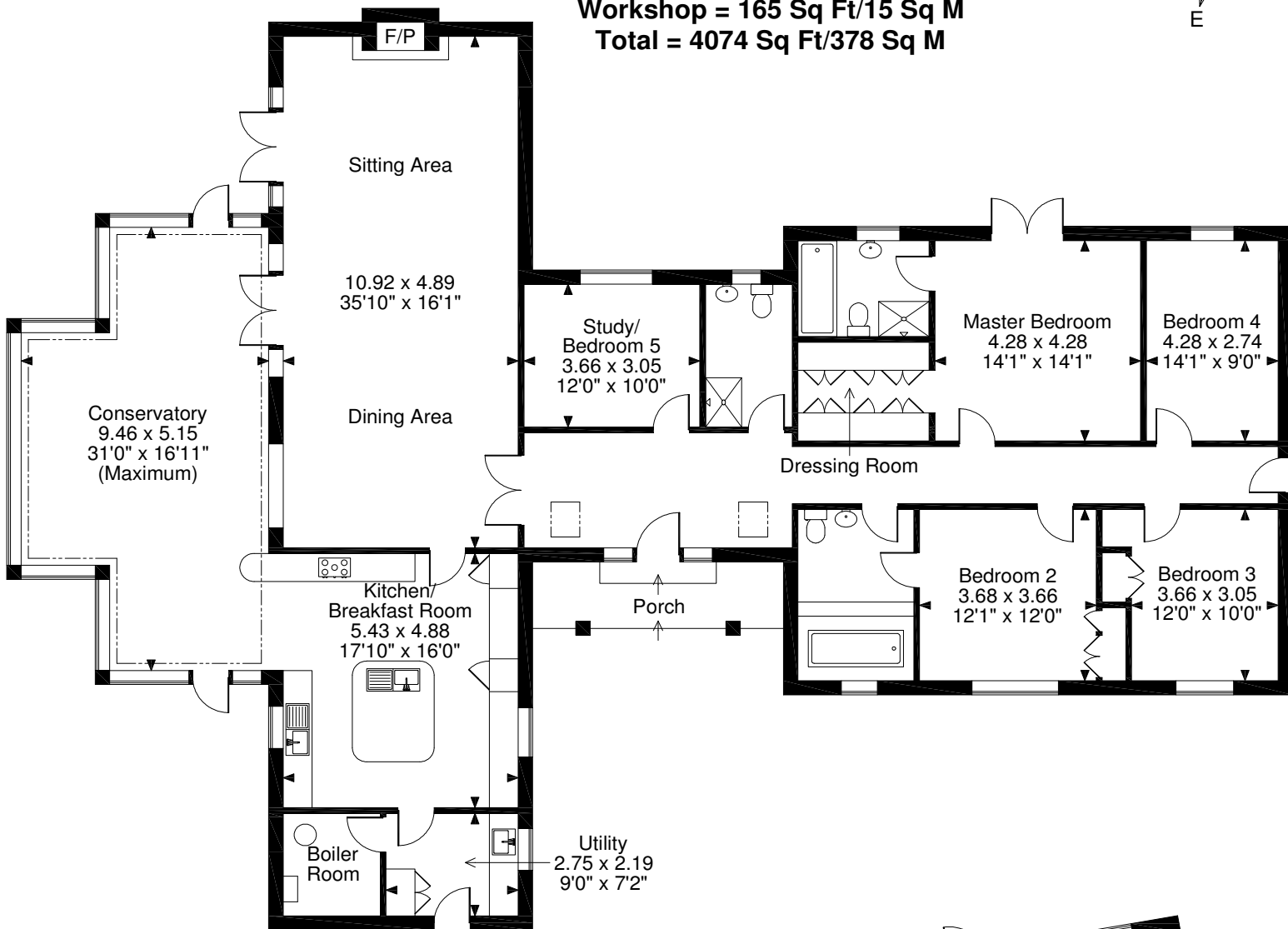
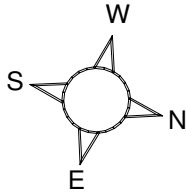
Main House = 2818 Sq Ft/262 Sq M

Garage = 354 Sq Ft/33 Sq M

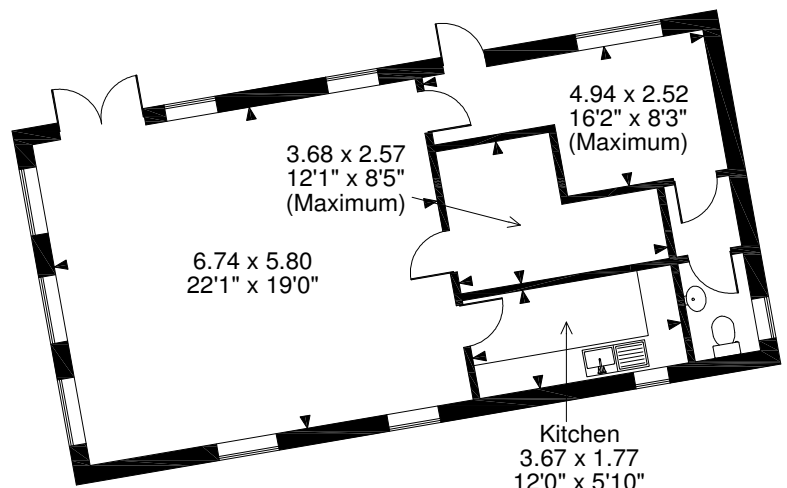
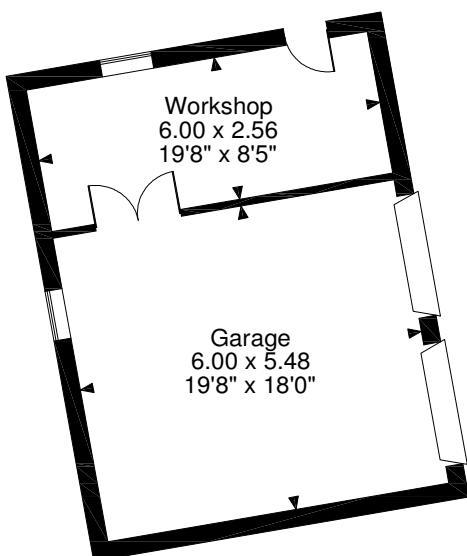
Office/ Annexe = 737 Sq Ft/68 Sq M

Workshop = 165 Sq Ft/15 Sq M

Total = 4074 Sq Ft/378 Sq M



**Ground Floor**



**Office/Annexe**

**FOR ILLUSTRATIVE PURPOSES ONLY - NOT TO SCALE**

The position & size of doors, windows, appliances and other features are approximate only.

© ehouse. Unauthorised reproduction prohibited. Drawing ref. dig/8239489/PPP